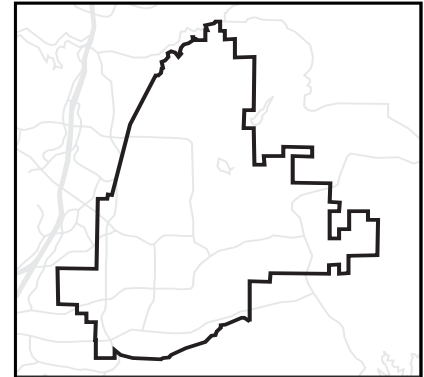


POPULATION AND HOUSING ESTIMATES

City of Poway



POPULATION AND HOUSING (2000 and 2006)

	April 1	January 1	2000 to 2006 Change	
	2000 Census	2006	Numeric	Percent
Total Population	48,044	50,542	2,498	5.2%
Household Population	47,618	50,116	2,498	5.2%
Group Quarters Population	426	426	0	0.0%
Total Housing Units	15,714	16,255	541	3.4%
Single Family	12,644	12,423	-221	-1.7%
Multiple Family	2,374	3,130	756	31.8%
Mobile Home and Other	696	702	6	0.9%
Occupied Housing Units	15,467	15,992	525	3.4%
Single Family	12,470	12,252	-218	-1.7%
Multiple Family	2,312	3,049	737	31.9%
Mobile Home and Other	685	691	6	0.9%
Vacancy Rate	1.6%	1.6%	0.0%	0.0%
Persons per Household	3.08	3.13	0.05	1.6%

HOUSEHOLD INCOME (real 1999 dollars, adjusted for inflation)

Households by Income Category	April 1	January 1	2000 to 2006 Change	
	2000 Census	2006	Numeric	Percent
Less than \$15,000	841	859	18	2.1%
\$15,000-\$29,999	1,468	1,538	70	4.8%
\$30,000-\$44,999	2,000	1,972	-28	-1.4%
\$45,000-\$59,999	1,957	1,975	18	0.9%
\$60,000-\$74,999	1,879	1,867	-12	-0.6%
\$75,000-\$99,999	2,392	2,516	124	5.2%
\$100,000-\$124,999	1,710	1,756	46	2.7%
\$125,000-\$149,999	1,136	1,099	-37	-3.3%
\$150,000-\$199,999	943	1,136	193	20.5%
\$200,000 or more	1,141	1,274	133	11.7%
Total Households	15,467	15,992	525	3.4%
Median Household Income				
Adjusted for inflation (1999 \$)	\$71,715	\$73,273	1,558	2.2%
Not adjusted for inflation (current \$)	\$71,715	\$93,542	21,827	30.4%

ADVISORY:

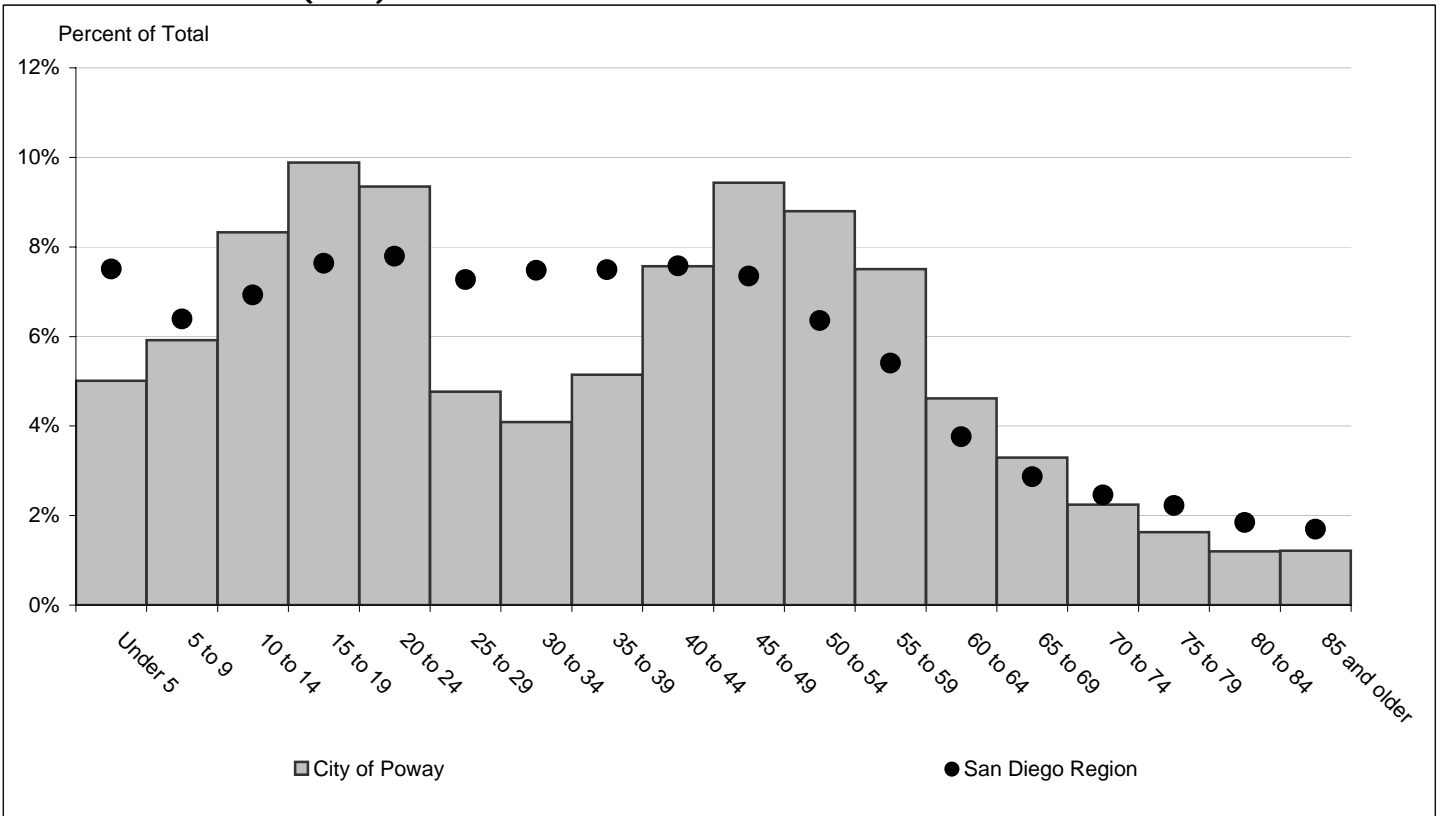
Some differences in housing unit counts are attributable to definitional differences in the source data. 2000 data are based on the 2000 Census. 2006 estimates are based on information from the San Diego County Assessor's office. The Census Bureau and Assessor's office use different definitions of "single-family," "multi-family," and "mobile home."

Caution should be taken when using data for small population groups, particularly at small levels of geography. Some 2000 Census data may not match information published by the U.S. Census Bureau for the following reasons: sample census data have been controlled to match 100 percent count (Summary File 1) data; and some minor adjustments were made (such as correcting the location of housing units that were erroneously allocated by the Census Bureau to roads and open space) to more accurately reflect the region's true population and housing distribution.

POPULATION BY GENDER AND AGE (2006)

	Total	Male	Female	Percent Female
Total Population	50,542	24,675	25,867	51%
Under 5	2,532	1,306	1,226	48%
5 to 9	2,990	1,462	1,528	51%
10 to 14	4,209	2,099	2,110	50%
15 to 17	3,035	1,523	1,512	50%
18 and 19	1,960	988	972	50%
20 to 24	4,724	2,444	2,280	48%
25 to 29	2,409	1,291	1,118	46%
30 to 34	2,068	1,081	987	48%
35 to 39	2,601	1,220	1,381	53%
40 to 44	3,824	1,705	2,119	55%
45 to 49	4,770	2,219	2,551	53%
50 to 54	4,447	2,096	2,351	53%
55 to 59	3,794	1,930	1,864	49%
60 and 61	1,023	521	502	49%
62 to 64	1,312	647	665	51%
65 to 69	1,666	793	873	52%
70 to 74	1,133	554	579	51%
75 to 79	823	352	471	57%
80 to 84	608	238	370	61%
85 and older	614	206	408	66%
Under 18	12,766	6,390	6,376	50%
65 and older	4,844	2,143	2,701	56%
Median age	37.6	35.6	39.3	-

POPULATION BY AGE (2006)



POPULATION BY RACE, ETHNICITY AND AGE (2006)

	Non-Hispanic					
	Hispanic	White	Black	American Indian	Asian & Pacific Isl.	Other
Total Population	6,061	37,363	858	173	4,384	1,703
Under 5	522	1,538	52	5	253	162
5 to 9	500	1,938	72	6	215	259
10 to 14	583	2,942	81	21	321	261
15 to 17	408	2,212	64	9	192	150
18 and 19	235	1,426	40	4	178	77
20 to 24	671	3,348	58	15	440	192
25 to 29	547	1,452	43	13	289	65
30 to 34	492	1,223	40	10	250	53
35 to 39	450	1,787	50	15	246	53
40 to 44	412	2,911	62	9	340	90
45 to 49	362	3,881	75	17	357	78
50 to 54	278	3,670	45	16	373	65
55 to 59	188	3,151	50	10	332	63
60 and 61	40	879	13	2	60	29
62 to 64	62	1,094	27	1	99	29
65 to 69	96	1,376	31	10	129	24
70 to 74	81	923	15	8	92	14
75 to 79	57	629	12	2	110	13
80 to 84	33	485	11	0	62	17
85 and older	44	498	17	0	46	9
Under 18	2,013	8,630	269	41	981	832
65 and older	311	3,911	86	20	439	77
Median age	26.0	41.4	32.4	36.2	36.1	18.7

POPULATION AND HOUSING CHARACTERISTICS (CHANGE 2000 - 2006)

