

**POPULATION AND HOUSING ESTIMATES**  
**ZIP Code 92127**  
**(2006 boundary)**



**POPULATION AND HOUSING (2000 and 2006)**

	April 1	January 1	2000 to 2006 Change	
	2000 Census	2006	Numeric	Percent
<b>Total Population</b>	<b>17,888</b>	<b>28,930</b>	<b>11,042</b>	<b>61.7%</b>
Household Population	17,533	28,594	11,061	63.1%
Group Quarters Population	355	336	-19	-5.4%
<b>Total Housing Units</b>	<b>6,431</b>	<b>10,280</b>	<b>3,849</b>	<b>59.9%</b>
Single Family	3,754	6,172	2,418	64.4%
Multiple Family	2,666	4,108	1,442	54.1%
Mobile Home and Other	11	0	-11	-100.0%
<b>Occupied Housing Units</b>	<b>6,245</b>	<b>9,470</b>	<b>3,225</b>	<b>51.6%</b>
Single Family	3,675	5,515	1,840	50.1%
Multiple Family	2,559	3,955	1,396	54.6%
Mobile Home and Other	11	0	-11	-100.0%
<b>Vacancy Rate</b>	<b>2.9%</b>	<b>7.9%</b>	<b>5.0%</b>	<b>172.4%</b>
<b>Persons per Household</b>	<b>2.81</b>	<b>3.02</b>	<b>0.21</b>	<b>7.5%</b>

**HOUSEHOLD INCOME (real 1999 dollars, adjusted for inflation)**

	April 1	January 1	2000 to 2006 Change	
	2000 Census	2006	Numeric	Percent
<b>Households by Income Category</b>				
Less than \$15,000	187	283	96	51.3%
\$15,000-\$29,999	572	794	222	38.8%
\$30,000-\$44,999	783	1,116	333	42.5%
\$45,000-\$59,999	886	1,221	335	37.8%
\$60,000-\$74,999	715	1,231	516	72.2%
\$75,000-\$99,999	1,242	1,791	549	44.2%
\$100,000-\$124,999	789	1,128	339	43.0%
\$125,000-\$149,999	341	597	256	75.1%
\$150,000-\$199,999	430	540	110	25.6%
\$200,000 or more	300	769	469	156.3%
<b>Total Households</b>	<b>6,245</b>	<b>9,470</b>	<b>3,225</b>	<b>51.6%</b>
<b>Median Household Income</b>				
Adjusted for inflation (1999 \$)	\$74,570	\$76,256	1,686	2.3%
Not adjusted for inflation (current \$)	\$74,570	\$97,350	22,780	30.5%

**ADVISORY:**

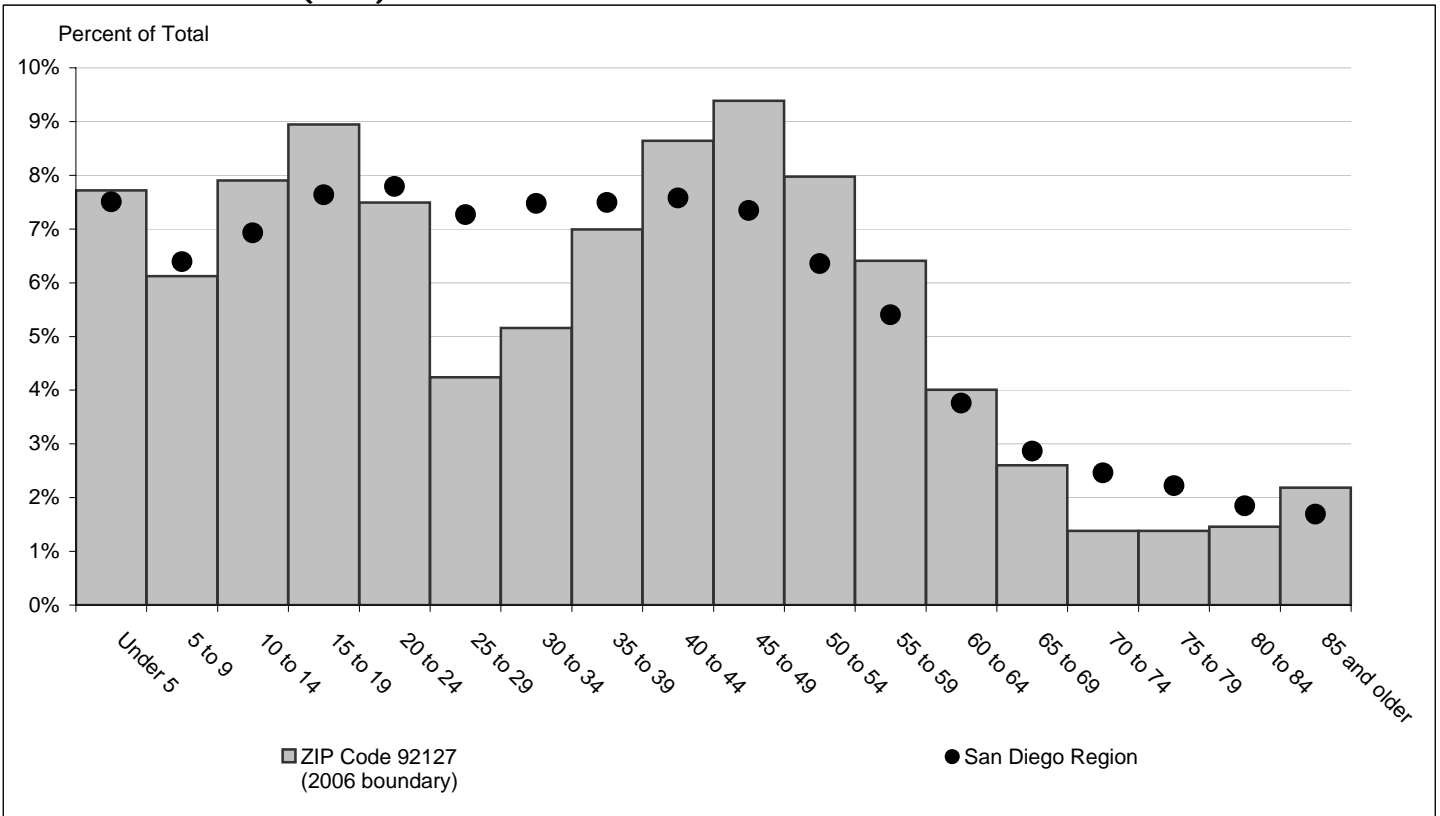
Some differences in housing unit counts are attributable to definitional differences in the source data. 2000 data are based on the 2000 Census. 2006 estimates are based on information from the San Diego County Assessor's office. The Census Bureau and Assessor's office use different definitions of "single-family," "multi-family," and "mobile home."

Caution should be taken when using data for small population groups, particularly at small levels of geography. Some 2000 Census data may not match information published by the U.S. Census Bureau for the following reasons: sample census data have been controlled to match 100 percent count (Summary File 1) data; and some minor adjustments were made (such as correcting the location of housing units that were erroneously allocated by the Census Bureau to roads and open space) to more accurately reflect the region's true population and housing distribution.

## POPULATION BY GENDER AND AGE (2006)

	Total	Male	Female	Percent Female
<b>Total Population</b>	<b>28,930</b>	<b>13,965</b>	<b>14,965</b>	<b>52%</b>
Under 5	2,233	1,095	1,138	51%
5 to 9	1,771	872	899	51%
10 to 14	2,286	1,159	1,127	49%
15 to 17	1,603	806	797	50%
18 and 19	985	496	489	50%
20 to 24	2,167	1,203	964	44%
25 to 29	1,226	628	598	49%
30 to 34	1,492	723	769	52%
35 to 39	2,022	981	1,041	51%
40 to 44	2,501	1,111	1,390	56%
45 to 49	2,716	1,262	1,454	54%
50 to 54	2,307	1,075	1,232	53%
55 to 59	1,854	892	962	52%
60 and 61	515	238	277	54%
62 to 64	644	310	334	52%
65 to 69	753	360	393	52%
70 to 74	400	191	209	52%
75 to 79	400	173	227	57%
80 to 84	423	166	257	61%
85 and older	632	224	408	65%
Under 18	7,893	3,932	3,961	50%
65 and older	2,608	1,114	1,494	57%
Median age	36.7	35.0	38.4	-

## POPULATION BY AGE (2006)



## POPULATION BY RACE, ETHNICITY AND AGE (2006)

	Non-Hispanic					
	Hispanic	White	Black	American Indian	Asian & Pacific Isl.	Other
<b>Total Population</b>	<b>2,373</b>	<b>19,876</b>	<b>689</b>	<b>102</b>	<b>4,707</b>	<b>1,183</b>
Under 5	195	1,325	26	4	558	125
5 to 9	152	1,138	23	2	282	174
10 to 14	203	1,564	43	3	289	184
15 to 17	144	1,067	31	5	250	106
18 and 19	101	666	23	5	136	54
20 to 24	214	1,419	62	6	340	126
25 to 29	164	754	35	3	198	72
30 to 34	199	862	59	14	288	70
35 to 39	229	1,211	88	18	389	87
40 to 44	238	1,644	116	11	431	61
45 to 49	167	1,967	67	6	465	44
50 to 54	133	1,706	38	8	388	34
55 to 59	89	1,436	30	8	275	16
60 and 61	30	402	5	2	76	0
62 to 64	24	508	16	1	90	5
65 to 69	32	586	8	4	116	7
70 to 74	25	295	8	2	61	9
75 to 79	18	355	0	0	21	6
80 to 84	6	380	8	0	27	2
85 and older	10	591	3	0	27	1
Under 18	694	5,094	123	14	1,379	589
65 and older	91	2,207	27	6	252	25
Median age	30.3	39.7	37.4	37.5	35.2	18.4

## POPULATION AND HOUSING CHARACTERISTICS (CHANGE 2000 - 2006)

