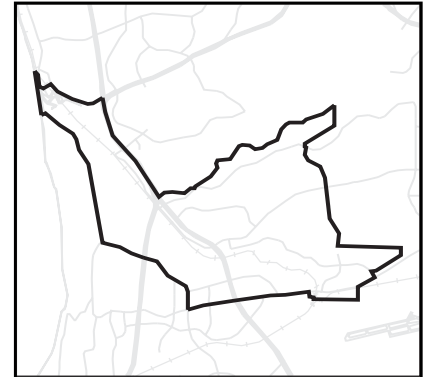


POPULATION AND HOUSING ESTIMATES
ZIP Code 92121
(2006 boundary)



POPULATION AND HOUSING (2000 and 2006)

	April 1	January 1	2000 to 2006 Change	
	2000 Census	2006	Numeric	Percent
Total Population	3,828	3,830	2	0.1%
Household Population	3,828	3,822	-6	-0.2%
Group Quarters Population	0	8	8	0.0%
Total Housing Units	1,722	1,683	-39	-2.3%
Single Family	959	609	-350	-36.5%
Multiple Family	763	1,074	311	40.8%
Mobile Home and Other	0	0	0	0.0%
Occupied Housing Units	1,662	1,617	-45	-2.7%
Single Family	938	592	-346	-36.9%
Multiple Family	724	1,025	301	41.6%
Mobile Home and Other	0	0	0	0.0%
Vacancy Rate	3.5%	3.9%	0.4%	11.4%
Persons per Household	2.30	2.36	0.06	2.6%

HOUSEHOLD INCOME (real 1999 dollars, adjusted for inflation)

	April 1	January 1	2000 to 2006 Change	
	2000 Census	2006	Numeric	Percent
Households by Income Category				
Less than \$15,000	182	153	-29	-15.9%
\$15,000-\$29,999	202	160	-42	-20.8%
\$30,000-\$44,999	194	175	-19	-9.8%
\$45,000-\$59,999	183	166	-17	-9.3%
\$60,000-\$74,999	183	157	-26	-14.2%
\$75,000-\$99,999	199	215	16	8.0%
\$100,000-\$124,999	236	204	-32	-13.6%
\$125,000-\$149,999	104	127	23	22.1%
\$150,000-\$199,999	100	161	61	61.0%
\$200,000 or more	79	99	20	25.3%
Total Households	1,662	1,617	-45	-2.7%
Median Household Income				
Adjusted for inflation (1999 \$)	\$65,738	\$74,761	9,023	13.7%
Not adjusted for inflation (current \$)	\$65,738	\$95,441	29,703	45.2%

ADVISORY:

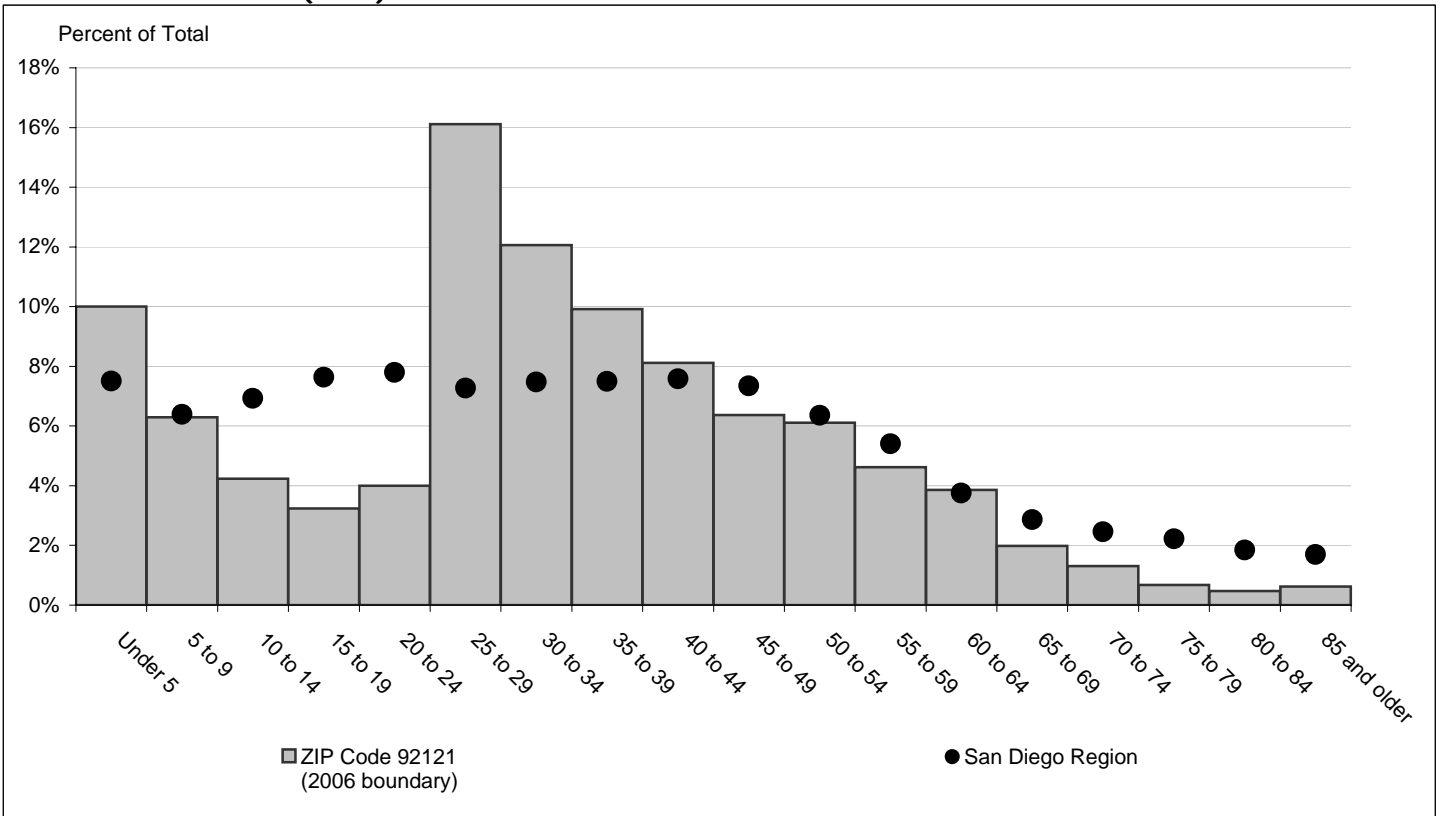
Some differences in housing unit counts are attributable to definitional differences in the source data. 2000 data are based on the 2000 Census. 2006 estimates are based on information from the San Diego County Assessor's office. The Census Bureau and Assessor's office use different definitions of "single-family," "multi-family," and "mobile home."

Caution should be taken when using data for small population groups, particularly at small levels of geography. Some 2000 Census data may not match information published by the U.S. Census Bureau for the following reasons: sample census data have been controlled to match 100 percent count (Summary File 1) data; and some minor adjustments were made (such as correcting the location of housing units that were erroneously allocated by the Census Bureau to roads and open space) to more accurately reflect the region's true population and housing distribution.

POPULATION BY GENDER AND AGE (2006)

	Total	Male	Female	Percent Female
Total Population	3,830	1,936	1,894	49%
Under 5	383	203	180	47%
5 to 9	241	126	115	48%
10 to 14	162	83	79	49%
15 to 17	84	46	38	45%
18 and 19	40	22	18	45%
20 to 24	153	79	74	48%
25 to 29	617	276	341	55%
30 to 34	462	254	208	45%
35 to 39	380	200	180	47%
40 to 44	311	156	155	50%
45 to 49	244	136	108	44%
50 to 54	234	109	125	53%
55 to 59	177	85	92	52%
60 and 61	56	26	30	54%
62 to 64	92	47	45	49%
65 to 69	76	39	37	49%
70 to 74	50	18	32	64%
75 to 79	26	12	14	54%
80 to 84	18	6	12	67%
85 and older	24	13	11	46%
Under 18	870	458	412	47%
65 and older	194	88	106	55%
Median age	32.5	32.6	32.5	-

POPULATION BY AGE (2006)



POPULATION BY RACE, ETHNICITY AND AGE (2006)

	Non-Hispanic					
	Hispanic	White	Black	American Indian	Asian & Pacific Isl.	Other
Total Population	249	1,950	70	6	1,393	162
Under 5	25	223	1	0	86	48
5 to 9	11	133	2	0	86	9
10 to 14	8	68	7	0	56	23
15 to 17	8	15	4	1	40	16
18 and 19	1	17	2	1	8	11
20 to 24	24	45	13	3	60	8
25 to 29	66	259	12	0	262	18
30 to 34	21	201	10	0	219	11
35 to 39	27	225	4	0	120	4
40 to 44	18	187	5	0	99	2
45 to 49	15	146	3	0	75	5
50 to 54	7	147	2	0	76	2
55 to 59	7	107	0	1	60	2
60 and 61	3	26	0	0	27	0
62 to 64	3	43	2	0	43	1
65 to 69	3	37	2	0	34	0
70 to 74	1	22	0	0	27	0
75 to 79	0	15	1	0	10	0
80 to 84	0	14	0	0	3	1
85 and older	1	20	0	0	2	1
Under 18	52	439	14	1	268	96
65 and older	5	108	3	0	76	2
Median age	28.6	35.3	27.5	21.7	32.2	15.2

POPULATION AND HOUSING CHARACTERISTICS (CHANGE 2000 - 2006)

